

I-205 IMPROVEMENTS

Stafford Road to OR 213



JUNE 2021

WWW.I205CORRIDOR.ORG

PHASE 1A: OR 43 TO OR 213

The I-205 Improvements Project will improve our economy by providing Oregonians safer, more reliable access to work and critical services, even after an earthquake or other major disaster. We are constructing the project in phases, with the first phase between OR 43 and OR 213 beginning in 2022. ODOT will award a separate tree removal contract in fall 2021 in preparation for Phase 1A construction.



IMPROVEMENTS INCLUDED IN PHASE 1A

- 1 Construct final configuration of Willamette Falls Drive/OR 43 intersection.
- 2 Construct final configuration of Willamette Falls Drive/Broadway intersection.
- 3 End roadwork at West A Bridge. *Bridge work in Phase 1C.*
- 4 Temporary mainline widening and temporary ramp alignment.
- 5 Remove third southbound lane south of Abernethy Bridge.
- 6 Construct final configuration of OR 43 roundabout, northbound entrance and southbound exit ramp.
- 7 Construct final configuration of OR 43 southbound intersection.
- 8 Maintain existing two-lane configuration northbound with additional entrance to exit auxiliary lanes on the Abernethy Bridge.
- 9 Seismically retrofit and widen Abernethy Bridge to carry three lanes and auxiliary lanes between interchanges.
- 10 Construct final configuration of OR 99E southbound and northbound ramp intersection, OR 99E entrance ramp and Clackamette Drive walls.
- 11 Construct wall at Main Street.
- 12 Construct half of the configuration of northbound entrance ramp. *Final configuration dependent on Main Street Bridge work in Phase 1B.*
- 13 Begin roadwork at Main Street Bridge. *Bridge work in Phase 1B.*
- 14 Construct sound wall. *There is no southbound roadway widening in Phase 1A.*
- 15 Re-stripe southbound lanes from two lanes plus an auxiliary lane to three lanes between OR 213 entrance and OR 99E exit. Install rumble strips.
- 16 Sign bridge for new southbound traffic configuration.

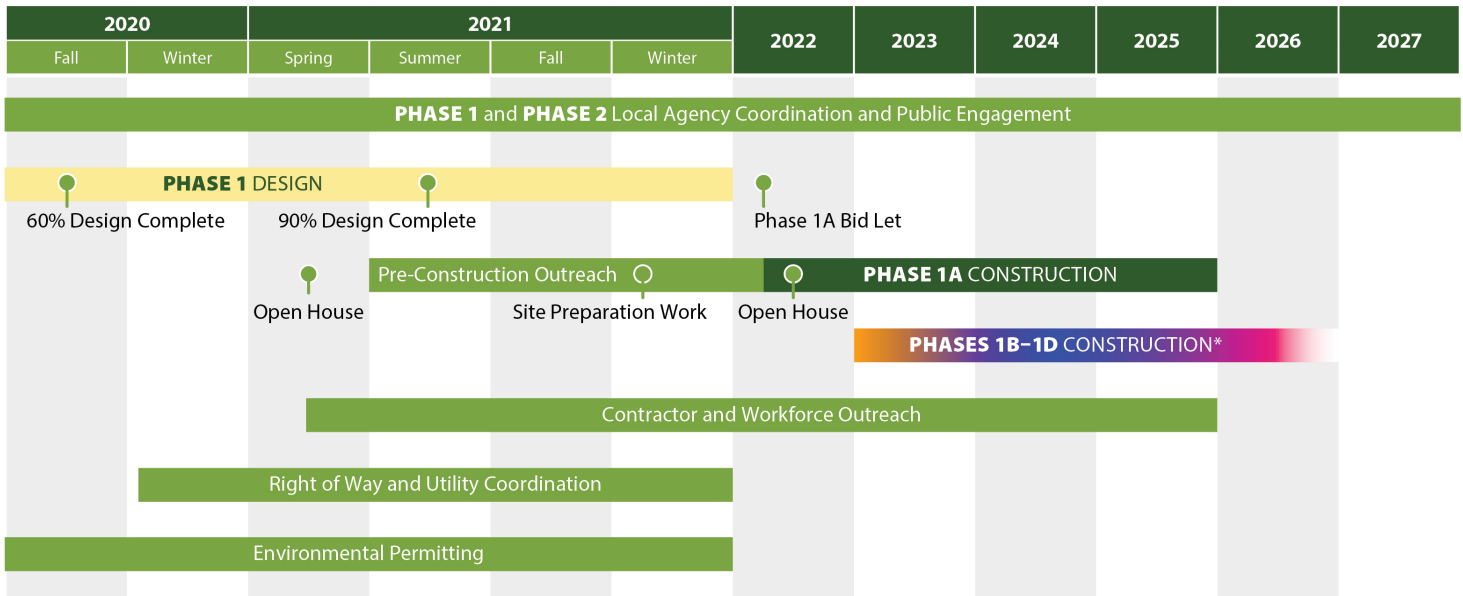
COMMITMENT TO WORKFORCE AND BUSINESS OPPORTUNITIES

We are committed to working with our industry partners. The project team is currently hosting constructability review meetings and briefings to provide information to interested contractors and gather feedback on design, specifications and potential risks.

We are also implementing strategies to position certified Disadvantaged Business Enterprises (DBEs) for success

and build a pipeline for future minority workers on the project, such as hosting “Meet the Primes” networking events. Additionally, we are in the process of identifying DBE, TERO and OJT program goals. To further these goals, we will ask the project contractor to provide small business capacity strengthening, technical assistance and performance metrics.

SCHEDULE



*Scheduling of Phases 1B, 1C and 1D is currently tentative and will be refined fall 2021.

FOR MORE INFORMATION

Workforce and Business Opportunities: www.I205Corridor.org

For other DBE information, visit:

www.oregon.gov/ODOT/Business/OCR/Pages/Disadvantaged-Business-Enterprise.aspx

Interested contractors can contact Allen Hendy, ODOT Project Manager, with questions or for more information:

Allen.HENDY@odot.state.or.us | 971-235-3861

For ADA (Americans with Disabilities Act) or Civil Rights Title VI accommodations, translation/interpretation services, or more information call 503-731-4128, TTY 800-735-2900 or Oregon Relay Service 7-1-1.

Si desea obtener información sobre este proyecto traducida al español, sírvase llamar al 503-731-4128.

Если вы хотите, чтобы информация об этом проекте была переведена на русский язык, пожалуйста, звоните по телефону 503-731-4128.

如果您想瞭解這個項目翻譯成 繁體中文 的相關資訊, 請致電 (503) 731-4128.

如果您想了解这个项目翻译成 简体中文 的相关信息, 请致电 503-731-4128.

이 프로젝트에 관한 한국어로 된 자료 신청방법 전화: 503-731-4128.

Nếu quý vị muốn thông tin về dự án này được dịch sang tiếng Việt, xin gọi 503-731-4128.